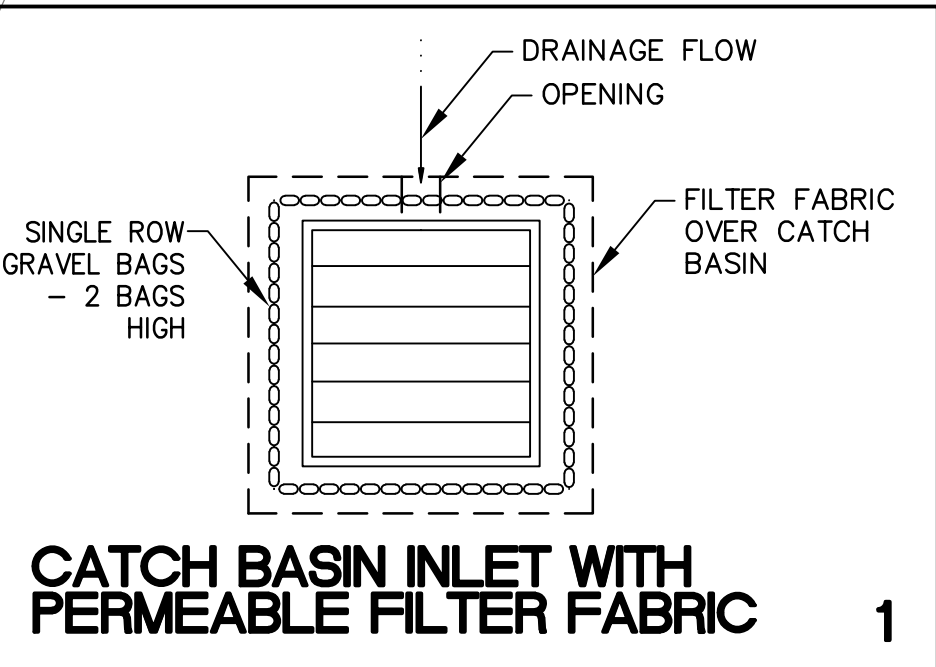


JOIN LINE - SEE SHEET C6.01

JOIN LINE - SEE SHEET C6.01



## BEST MANAGEMENT PRACTICES FOR CONSTRUCTION ACTIVITIES

DETAILED IN THE CALIFORNIA STORM WATER BEST MANAGEMENT PRACTICES HANDBOOK - CONSTRUCTION, JULY 2012

EROSION CONTROL

EC-1 SCHEDULING

SEDIMENT CONTROL

SE-5 FIBER ROLLS

SE-6 GRAVEL BAG BERM

SE-7 STREET SWEEPING AND VACUUMING

SE-10 STORM DRAIN INLET PROTECTION

TRACKING CONTROL

TC-1 STABILIZED CONSTRUCTION ENTRANCE/EXIT

TC-3 ENTRANCE/OUTLET TIRE WASH

WIND EROSION CONTROL

WE-1 WIND EROSION CONTROL

NON-STORM WATER CONTROL

NS-1 WATER CONSERVATION PRACTICES

NS-3 PAVING AND GRINDING OPERATIONS

NS-6 ILLUOT CONNECTION/ILLEGAL DISCHARGE

NS-8 DETECTION AND REPORTING

NS-9 VEHICLE AND EQUIPMENT CLEANING

NS-10 VEHICLE AND EQUIPMENT FUELING

NS-11 PILE DRIVING OPERATION

WASTE MANAGEMENT AND MATERIALS POLLUTION CONTROL

WM-1 MATERIAL DELIVERY AND STORAGE

WM-2 MATERIAL USE

WM-3 STOCKPILE MANAGEMENT

WM-4 SPILL AND PREVENTION CONTROL

WM-5 SOLID WASTE MANAGEMENT

WM-8 CONCRETE WASTE MANAGEMENT

WM-9 SANITARY/SEPTIC WASTE MANAGEMENT

SECTION 2 OF THE CASQA BMP CONSTRUCTION HANDBOOK, JULY 2012, IS PART OF THESE EROSION CONTROL PLANS, INCLUDING BUT NOT LIMITED TO:

• MINIMUM REQUIREMENTS

• GOOD HOUSEKEEPING PRACTICES

• STAFF TRAINING

• SITE INSPECTIONS

• BMP MONITORING AND MAINTENANCE

• STORMWATER POLLUTION CONTROL DOCUMENTATION

## STORM WATER POLLUTION CONTROL

CONSTRUCTION MEANS CONSTRUCTING, CLEARING, GRADING OR EXCAVATION THAT RESULT IN SOIL DISTURBANCE. CONSTRUCTION INCLUDES STRUCTURE TEARDOWN (DEMOLITION). IT DOES NOT INCLUDE ROUTINE MAINTENANCE TO MAINTAIN ORIGINAL LINE AND GRADE, HYDRAULIC CAPACITY, OR ORIGINAL PURPOSE OF FACILITY; EMERGENCY CONSTRUCTION ACTIVITIES REQUIRED TO IMMEDIATELY PROTECT PUBLIC HEALTH AND SAFETY; INTERIOR REMODELING WITH NO OUTSIDE EXPOSURE OF CONSTRUCTION MATERIAL OR CONSTRUCTION WASTE TO STORM WATER; MECHANICAL PERMIT WORK; OR SIGN PERMIT WORK. (ORDER NO. 01-182, NPDES PERMIT NO. CAS004001 - PART 5: DEFINITIONS)

1. ERODED SEDIMENTS AND POLLUTANTS SHALL BE RETAINED ON SITE AND SHALL NOT BE TRANSPORTED FROM THE SITE VIA SHEET FLOW, SWALES, AREA DRAINS, NATURAL DRAINAGE OR WIND.
2. STOCKPILES OF EARTH AND OTHER CONSTRUCTION-RELATED MATERIALS SHALL BE COVERED AND/OR PROTECTED FROM BEING TRANSPORTED FROM THE SITE BY WIND OR WATER.
3. FUELS, OILS, SOLVENTS AND OTHER TOXIC MATERIALS MUST BE STORED IN ACCORDANCE WITH THEIR LISTING AND SHALL NOT CONTAMINATE THE SOIL NOR THE SURFACE WATERS. ALL APPROVED TOXIC STORAGE CONTAINERS ARE TO BE PROTECTED FROM THE WEATHER. SPILLS MUST BE CLEANED UP IMMEDIATELY AND DISPOSED OF PROPERLY AND SHALL NOT BE WASHED INTO THE DRAINAGE SYSTEM.
4. NON-STORM WATER RUNOFF FROM EQUIPMENT AND VEHICLE WASHING AND ANY OTHER ACTIVITY SHALL BE CONTAINED ON THE PROJECT SITE.
5. EXCESS OR WASTE CONCRETE MAY NOT BE WASHED INTO THE PUBLIC WAY OR ANY DRAINAGE SYSTEM. PROVISIONS SHALL BE MADE TO RETAIN CONCRETE WASTE ON-SITE UNTIL IT CAN BE APPROPRIATELY DISPOSED OF OR RECYCLED.
6. TRASH AND CONSTRUCTION -RELATED SOLID WASTES MUST BE DEPOSITED INTO A COVERED RECEPTACLE TO PREVENT CONTAMINATION OF STORM WATER AND DISPERSAL BY WIND.
7. SEDIMENTS AND OTHER MATERIALS SHALL NOT BE TRACKED FROM THE SITE BY VEHICLE TRAFFIC. THE CONSTRUCTION ENTRANCE ROADWAYS MUST BE STABILIZED SO AS TO INHIBIT SEDIMENTS FROM BEING DEPOSITED INTO THE STREET/PUBLIC WAYS. ACCIDENTAL DEPOSITIONS MUST BE SWEEPED UP IMMEDIATELY AND MAY NOT BE WASHED DOWN BY RAIN OR BY ANY OTHER MEANS.
8. RETENTION BASINS OF SUFFICIENT SIZE SHALL BE PROVIDED TO RETAIN STORM WATER RUNOFF ON-SITE AND SHALL BE PROPERLY LOCATED TO COLLECT ALL TRIBUTARY SITE RUNOFF.
9. WHERE RETENTION OF STORM WATER RUNOFF ON-SITE IS NOT FEASIBLE DUE TO SITE CONSTRAINTS, RUNOFF MAY BE CONVEYED TO THE STREET AND THE STORM DRAIN SYSTEM PROVIDED THAT AN APPROVED FILTERING SYSTEM IS INSTALLED AND MAINTAINED ON-SITE DURING THE CONSTRUCTION DURATION.
10. GRAVEL BAGS SHOWN ON THIS PLAN SHALL BE ADJUSTED AS NEEDED TO CONSIDER WITH ACTUAL ROUGH GRADING & SITE DEMOLITION CONDITIONS AS WORK PROGRESSES TO PROVIDE EROSION CONTROL PROTECTION.
11. GRAVEL BAGS SHALL BE PLACED AT THE END OF THE WORK DAY, AT ENTRANCES TO THE SITE, BEFORE CONTRACTOR LEAVES THE SITE, WHEN THE FORECAST FOR RAIN IS AT LEAST 50% THAT EVENING.

## TYPICAL DEMOLITION DEBRIS NOTES

1. EROSION CONTROL DEVICES SHOWN ON THE PLAN MAY BE REMOVED WHEN APPROVED BY THE BUILDING OFFICIAL IF THE DEMOLITION OPERATION HAS PROGRESSED TO THE POINT WHERE THEY ARE NO LONGER REQUIRED.
2. ALL SILT AND DEBRIS SHALL BE REMOVED FROM ALL DEVICES WITHIN 24 HOURS AFTER EACH RAINSTORM AND BE DISPOSED OF PROPERLY.
3. A GUARD SHALL BE POSTED ON THE SITE WHENEVER THE DEPTH OF WATER IN ANY DEVICE EXCEEDS TWO FEET. THE DEVICE SHALL BE DRAINED OR PUMPED WITHIN 24 HOURS AFTER EACH RAINSTORM. PUMPING AND DRAINING OF ALL BASINS AND DRAINAGE DEVICES MUST COMPLY WITH THE APPROPRIATE BMP FOR DEWATERING OPERATIONS.
4. THE PLACEMENT OF ADDITIONAL DEVICES TO CONTAIN POLLUTANTS WITHIN THE SITE IS LEFT TO THE DISCRETION OF THE FIELD ENGINEER. ADDITIONAL DEVICES AS NEEDED SHALL BE INSTALLED TO RETAIN SEDIMENTS AND OTHER POLLUTANTS ON SITE.
5. STORM WATER POLLUTION DEVICES ARE TO BE MODIFIED, AS NEEDED, AS THE PROJECT PROGRESSES, THE DESIGN AND PLACEMENT OF THESE DEVICES IS THE RESPONSIBILITY OF THE FIELD ENGINEER. PLANS REPRESENTING CHANGES MUST BE SUBMITTED FOR APPROVAL IS REQUESTED BY THE BUILDING OFFICIAL.
6. EVERY EFFORT SHOULD BE MADE TO ELIMINATE THE DISCHARGE OF NON-STORM WATER FROM THE PROJECT SITE AT ALL TIMES.
7. POLLUTANTS MUST BE RETAINED ON-SITE AND MAY NOT BE TRANSPORTED FROM THE SITE VIA PUMPS, SHEET FLOW, SWALES, AREA DRAINS, NATURAL DRAINAGE COURSES, OR WIND.
8. CONTRACTORS ARE RESPONSIBLE TO INSPECT THAT ALL BMPs ARE INSTALLED AND FUNCTIONING PROPERLY IF THERE IS A 40% CHANCE OF 0.25 INCHES OR GREATER OF PREDICTED PRECIPITATION, AND AFTER ACTUAL PRECIPITATION. A CONSTRUCTION SITE INSPECTION CHECKLIST AND INSPECTION LOG SHALL BE MAINTAINED AT THE PROJECT SITE AT ALL TIMES AND AVAILABLE FOR REVIEW BY THE BUILDING OFFICIAL.
9. MATERIALS MAY NOT BE TRACKED FROM THE SITE BY VEHICLE TRAFFIC. THE CONSTRUCTION ENTRANCE ROADWAYS MUST BE STABILIZED SO AS TO INHIBIT SEDIMENTS FROM BEING DEPOSITED INTO THE PUBLIC WAY. ACCIDENTAL DEPOSITIONS MUST BE SWEEPED UP IMMEDIATELY AND MAY NOT BE WASHED DOWN BY RAIN OR OTHER MEANS.
10. A STAND-BY CREW FOR EMERGENCY WORK SHALL BE AVAILABLE AT ALL TIMES DURING THE RAINY SEASON (NOVEMBER 1 TO APRIL 15). NECESSARY MATERIALS SHALL BE AVAILABLE ON-SITE AND STOCKPILED AT CONVENIENT LOCATIONS TO FACILITATE RAPID CONSTRUCTION OF EMERGENCY DEVICES WHEN RAIN IS IMMINENT.

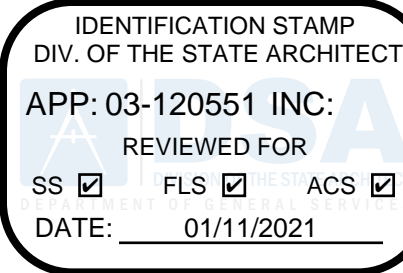
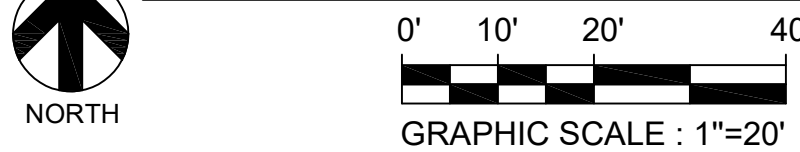
## EROSION CONTROL KEY NOTES

1. COVER CATCH BASIN INLET WITH PERMEABLE FILTER PER DETAIL 1 ON SHEET C6.02.
2. SINGLE ROW GRAVEL BAGS - 2 BAGS HIGH (PER SE-8 OF CASQA BMP MANUAL).
3. INSTALL TEMPORARY CONSTRUCTION FENCE WITH WIND SCREEN.
4. INSTALL TEMPORARY WIND SCREEN TO EXISTING FENCE.
5. ENTRANCE STABILIZATION DURING CONSTRUCTION.
6. PROTECT EXISTING TREES DURING CONSTRUCTION.

## LEGEND

- GRAVEL BAGS
- SCREENED FENCE
- TREE PROTECTION FENCE
- DRAINAGE FLOW

## EROSION CONTROL PLAN



## REVISIONS



NORWALK LA MIRADA UNIFIED SCHOOL DISTRICT  
LA MIRADA HIGH SCHOOL NEW FOOTBALL  
STADIUM PROJECT  
13520 ADELA DRIVE, LA MIRADA, CA 90038

DSA # 03-120551

**NAC**  
ARCHITECTURE

NAC NO. 161-19015  
DATE 12/10/2020

DSA SUBMISSION

EROSION  
CONTROL PLAN

**C6.02**